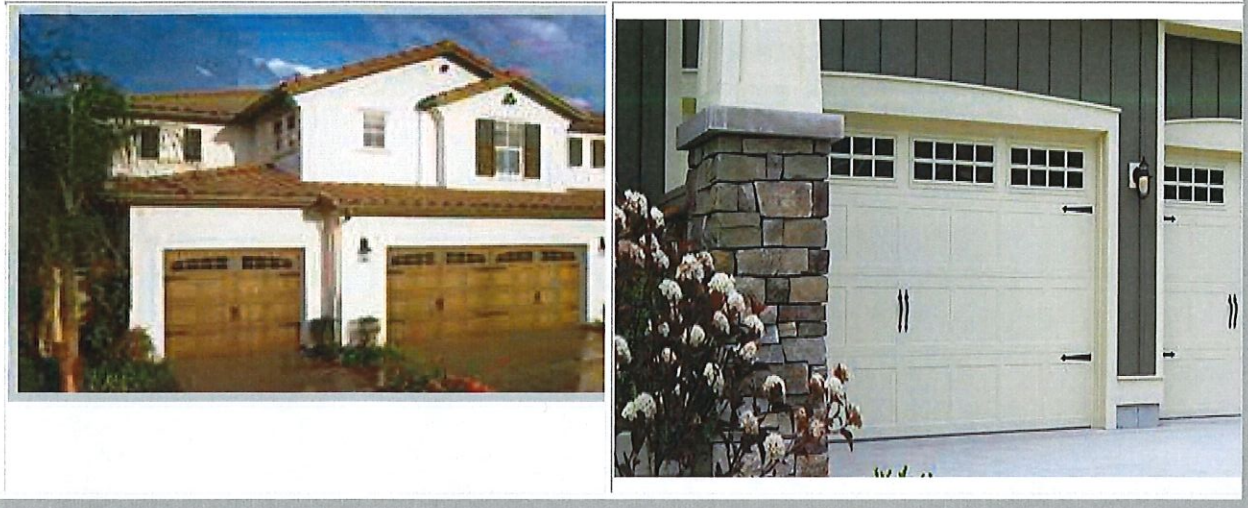


C.H.I. Carriage House Garage Door Models 5283 and 5983



Model 5283 -- Carriage House Garage Door Insulated with Steel Back Short design

Model 5983 -- Carriage House Garage Door Insulated with Steel Back Long Design

Construction

- Door sections are formed from 27-gauge exterior and interior galvanized draw quality steel.
- Extra-heavy paint system includes .25 mil. primer with rust inhibitor and a .75 mil. coating of baked-on polyester paint.
- Hinges are stamped from galvanized steel in a "wide body" pattern for greater stability and longer life.
- Long-lasting rollers assure consistent, efficient operation.
- Extension or torsion springs are individually computer-calibrated to lift your door.
- Standard decorative hardware is available for all doors or add optional Wrought Iron designs to replicate an old-world look.
- Exterior decorative hardware includes 4 hinges, 2 handles and pop rivets for mounting to face.
- Section joints are roll-formed into a tongue-and-groove design which produces a superior weather seal.

- Glazing options include standard glass and glue chip pattern with 5 optional insert designs.

Insulation

- 1 13/16" polystyrene insulation, glued on both sides.
- Insulated R-value of 9.65

Colors



WINDOW OPTIONS

[Glazing](#)

[Inserts](#)

[Designer Glass](#)

HARDWARE OPTIONS

ACCENTS IMAGES

MLB ACCENTS

ACCENTS LOGOS